

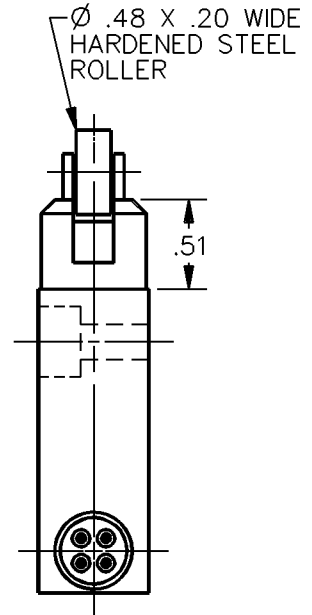
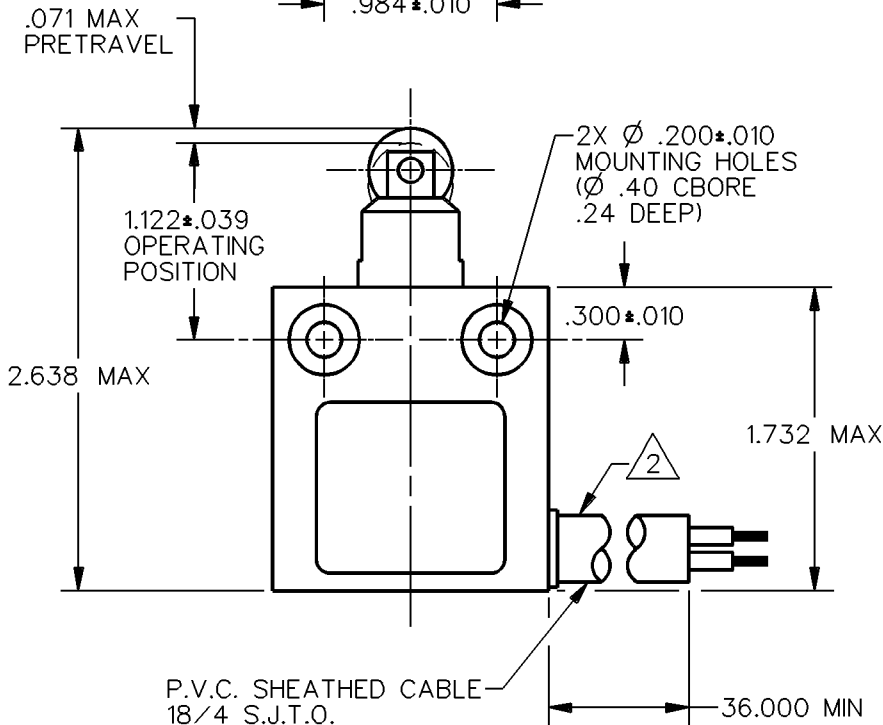
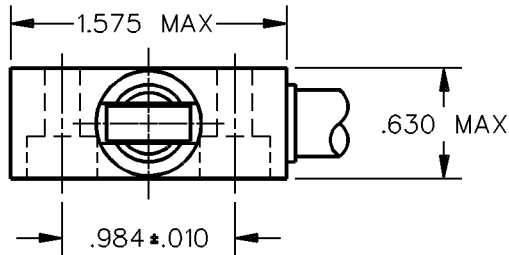
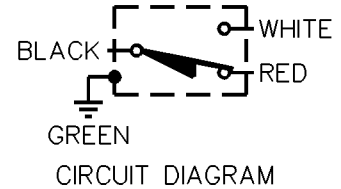
MICRO SWITCH
a Honeywell Division

FED. MFG. CODE 91929

**MINIATURE PRECISION
LIMIT SWITCH**

CATALOG LISTING

914CE2-3A

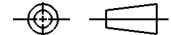


- NOTES
1 - ZINC HOUSING FINISHED WITH GRAY PAINT
2 - SIDE EXIT CABLE

ANSI Y14.5M-1982 APPLIES

THIS DRAWING COVERS A PROPRIETARY ITEM AND IS THE PROPERTY OF MICRO SWITCH, A DIVISION OF HONEYWELL. THIS DRAWING IS NOT TO BE COPIED OR USED WITHOUT THE APPROVAL OF MICRO SWITCH.

THIRD ANGLE PROJECTION



CHARACTERISTICS	ELECTRICAL DATA	SCALE FULL	DO NOT SCALE PRINT
OPERATING FORCE — — — 2.7 LB MAX	CONTACT ARRANGEMENT S P D T	UNLESS OTHERWISE SPECIFIED TOLERANCES ARE	
RELEASE FORCE — — — — 1 LB MAX	5A - 250 VAC 1/10HP - 125 OR 250 VAC	ONE PLACE (.01)	±.030
DIFFERENTIAL TRAVEL — — — .004 MAX		TWO PLACE (.00)	±.015
OVERTRAVEL — — — — — .118 MIN		THREE PLACE (.000)	±.005
		ANGLES	±
		WEIGHT	

914CE2-3A
 M
 DRAWING NUMBER
 1
 ISSUE
 REVISIONS
 CHECK
 CHECK
 DDM/CAD
 DRAWN
 SA V 10 OCT 91
 CHECK

REPLACES
 RELEASE NO. CO-69061